



**CORPUS  
ELECTRIC**



**CHRISTI  
COMPANY**

100% EMPLOYEE OWNED



Your Premiere Electrical Supply Wholesaler in South Texas

**POWER DISTRIBUTION EQUIPMENT  
PROCESS CONTROL SOLUTIONS  
CONSTRUCTION MATERIALS**

[cc-electric.com](http://cc-electric.com)





# Safe. Reliable. Efficient.

Crouse-Hinds series products are engineered for the most demanding environments.

With its Crouse-Hinds series portfolio, Eaton is the world's leading provider of electrical and instrumentation products for harsh and hazardous environments. Our products perform to the highest standard of safety and reliability, keeping people safe and plants running. The more demanding the environment, the likelier you are to find our products at the very center of operations.



Crouse-Hinds series

Explore Crouse-Hinds series solutions at  
Eaton.com



AD-001004EN

# THE OKONITE ADVANTAGE

Introduced by Okonite, with nearly 50 years of service history - Okoguard EPR cables have become the standard of unequaled excellence in power cables.

At Okonite, we believe in continuous modernization and lean manufacturing programs which have resulted in a series of plant expansions and upgrades. We invite you to come see any of our facilities and get a first-hand look at what Okonite is doing to support the markets we serve.

If you would like to experience one of our cutting edge Manufacturing plants or Service Centers please contact your local Sales Representative to schedule a tour for you or your organization.

#### OKONITE MANUFACTURING PLANTS:

Cumberland, RI | Orangeburg, SC | Paterson, NJ |  
Richmond, KY | Santa Maria, CA

#### OKONITE SERVICE CENTERS:

Houston, TX | Kansas City, KS | Pittsburg, PA  
Portland, OR | New Orleans, LA

#### IN-STOCK AND READY TO SHIP:

- ✓ MV-105 EPR | 2.4kV | 5kV | 15kV | 35kV
- ✓ 600V Power and Control XHHW-2 Tray Cable
- ✓ 300V | 600V Instrumentation Cable
- ✓ 600V | 2.4kV | 5kV | 15kV CLX MC Cable Class I | Div 1



*Okonite Cables...A higher Standard!*



**THE  
OKONITE  
COMPANY**

802 Century Plaza  
Houston, TX 77073  
281.821.5500 [www.okonite.com](http://www.okonite.com)  
Email: [houston@okonite.com](mailto:houston@okonite.com)

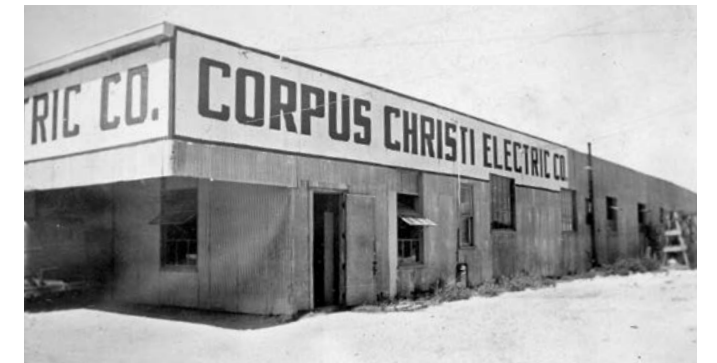






Welcome to **Corpus Christi Electric Company (CCEC)**. Founded in 1931, we are the oldest electrical supply wholesaler in Corpus Christi, Texas. Our success over the past 90+ years is due to prioritizing excellent customer service. **CCEC** is local and has established a family-oriented culture throughout the organization, which extends out to our customers. Unlike large national chains, our customers experience genuine and personal relationships with our highly knowledgeable staff.

**CCEC** is 100% employee-owned, meaning everyone is vested in your success and that is the difference. Many of our customers rely on us for their supplies but may not know the full strength of what we provide.



# EMPLOYEE OWNED... FOR A BETTER CUSTOMER EXPERIENCE

Top Brands... In Stock • Project Design & Management Support • Equipment Specifications • Retrofit/Retro-Fill Applications  
Factory Acceptance Testing • Field Startup & Commissioning Services • Turnkey Automation Solutions • Training Support



Our reputation for excellence has helped us establish strong working relationships with our local customers and has helped **CCEC** serve as the largest industrial electrical supply company in South Texas.

Our goal is to build lifelong relationships.





# IMPRESSIVE INVENTORY

Boasting the largest inventory in South Texas, **CCEC** is going to have what is needed on hand to keep your operation running smoothly. We also work closely with our valued customers to stock products ahead of time to ensure there are no delays. If you have special requests, we can accommodate those, too.

**65,000 sq. ft. Warehouse**

**10 Acres of Storage Space**

**35,000+ Products, In Stock**

**115+ Manufacturers**

# CABLE MANAGEMENT

Customers can purchase wire and cable by the foot or the master reel. We stock a full line of power, instrument and control cable for the industrial user. Our services offer the ability to cut at a tolerance of  $\pm 0\%$ , tag and ship reels to the customer jobsites as needed. **Corpus Christi Electric's** cable management program provides proven savings to customers by reducing cable waste, loss and damage. **CCEC** stocks both 5 and 15KV power cable and can offer Hipot testing upon request.



[cc-electric.com](http://cc-electric.com)





# Space is powerful

We've captured that power in the Bussmann™ series CUBEFuse™, now available up to 400 amps.

The CUBEFuse delivers the smallest footprint compared to any Class J solution — requiring up to 69% less space when combined with its unique cULus Listed Compact Circuit Protector switch.

What can the power of space do for you?



**UL listed from end to end**  
T&B Liquidtight Systems® —  
The proof is in the SYSTEM

Maintain enclosure  
UL ratings through  
the fittings and conduit.

TNBLiquidtight.com



nvent | **HOFFMAN** We connect and protect

## EXTREME ENVIRONMENTS ENCLOSURE

Reliable protection  
built to handle  
**the most demanding  
operating conditions.**

- DURABLE**
- EASY MAINTENANCE**
- EXTEND LIFESPAN**



- Padlocking handle, lift off, & lockable door
- Available in 304 & 316 Stainless Steel
- Removable and replaceable gaskets

**INDUSTRY STANDARDS**  
• Certified to UL Type 4X, IEC IP66, IP69, and IP69K

**LEARN MORE**



Our powerful portfolio of brands:  
CADDY ERICO HOFFMAN ILSCO RAYCHEM SCHROFF



**EAT•N** **BUSSMANN**  
SERIES



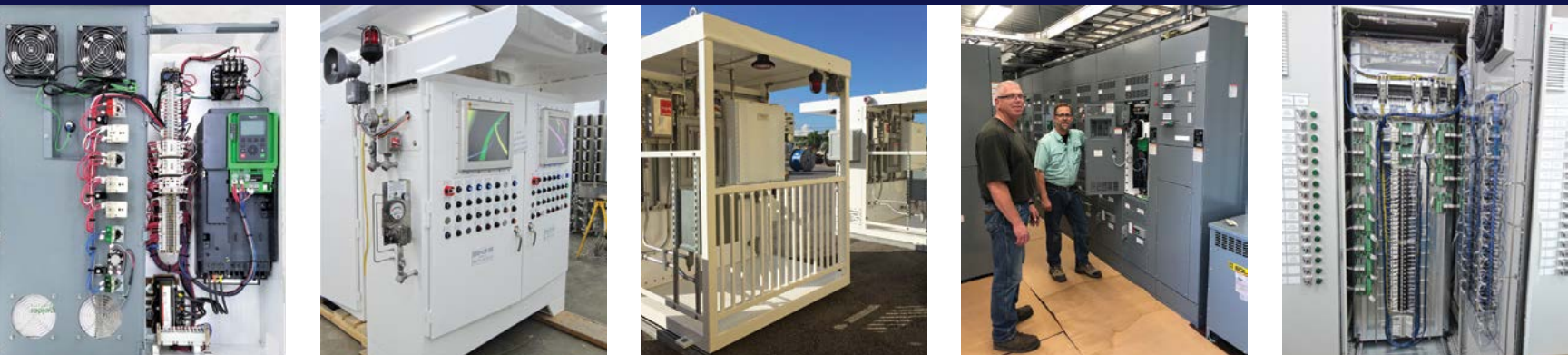
# PANEL SHOP

**CCEC** designs, engineers and builds Control Panels, Marshalling Panels, Instrumentation Panels, PLC Panels, SCADA (RTU) Systems and Fiber-Optic Interface Systems. We can provide turnkey solutions—providing approval drawings (ACAD), fabrication and delivery of the finished product. The entire project is handled in our climate-controlled panel building facility.

**UL 508A (non-hazardous),  
UL698 & 698A (hazardous) Certified**

**Builds Conform to  
NEC & NFPA-70E Standards**

**Field Startup &  
Commissioning Services**



**Custom Simulators  
& End-User Training**

**PLC & HMI Programming  
& Configuration**

**Redundant Safety  
Instrumented Systems**



# RACK SHOP

**Corpus Christi Electric's** engineering and applications team specializes in the fabrication of switch racks to meet customer specifications. Design, engineering, drawings, material acquisitions and fabrication of the finished product are all handled at our facility.

Our expertise in manufacturing racks goes beyond 35 years, supplying switch racks to many refiners and petrochemical facilities in the Gulf Coast Region.

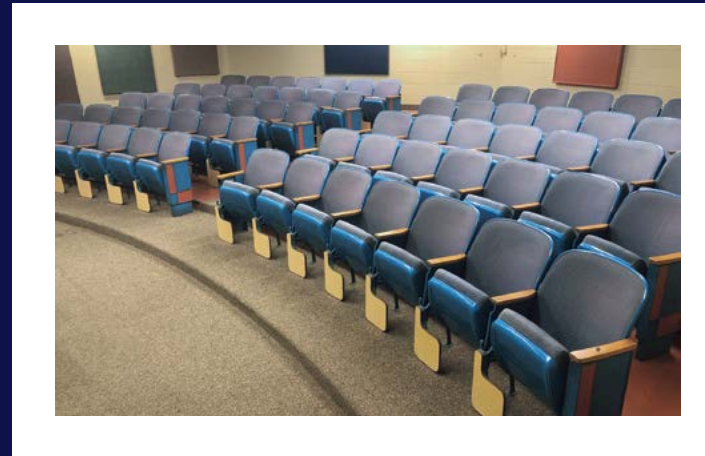


[cc-electric.com](http://cc-electric.com)



# EXPERT TRAINING

**Corpus Christi Electric** has the facilities and resources to offer a variety of training programs and seminars to our valued customers. Our main office building features a 75-seat auditorium, as well as a technical lab for hands-on training. If you're in need of specialized training, our team can handle that too, at your location or ours. No matter what your operational needs are, **CCEC** has you covered!



# TRANSPORT & STORAGE

**Corpus Christi Electric** offers daily delivery routes that follow a set schedule you can count on. In the case of an emergency, we quickly dispatch the delivery where and when you need it.

With over 65,000 square feet of covered warehouse space, customers can confidently trust us to manage large-volume orders and maintain required inventory levels to accommodate customer projects, turnarounds or emergency situations. We have the space, so you don't have to make space at your location or jobsite.



**When you don't have the space for materials, we can help!**

[cc-electric.com](http://cc-electric.com)





**Dialight**  
World Leading Industrial  
LED Lighting Solutions  
[www.dialight.com](http://www.dialight.com)

designed to be better.

**BUILT TO  
HANDLE  
THE LOAD.**

**legrand®**

### Itray Ladder Tray

Choose the better cable tray. With **50%** less hardware, trim installation down by **30%**. Smoother cable pulling and fewer supports means your job is done faster.

### Cable Channel Tray

Slide-in splice plates and easy snap-in hardware make this product a quick installation on every job. And with 20' lengths, your support locations are reduced by up to **25%**. The entire system is easy to install, adjust or move.

**IN STOCK LOCALLY!**

To learn more, visit [legrand.us/cablofil](http://legrand.us/cablofil).





Now a part of **Marmon Industrial Energy & Infrastructure**, Dekoron Wire & Cable is a brand that combines manufacturing expertise with sister facilities to offer a complete solution of wire and cable, fire-rated cable, along with pre-insulated and traced tubing offerings for the upstream, midstream, and downstream markets.

**CC ELECTRIC** has  
**Marmon Industrial &  
Energy** cable & wire  
products where and  
when you need them.

Recognizable in the industry for over 70 years, Dekoron Wire & Cable has long been a major player in the design and manufacture of industrial cables. To help service the oil & gas market throughout the Gulf Coast and Southeastern U.S. regions, Marmon Industrial Energy & Infrastructure is proud to continue supporting the Dekoron brand and its partnerships with groups like Corpus Christi Electric.

CC Electric's on hand inventory of 1 to 50 pair instrumentation, thermocouple extension, and fire resistant cables allows for fast turnaround times to support end users and EPC's.



**Featuring industry-recognized brands:**

**EXANE**  
World Class Engineered Cable



**Dekoron** INDUSTRIAL  
Wire & Cable LLC CABLE  
SOLUTIONS

**DEKORON**  
**Unitherm**  
Tubing Bundle Experts Since 1962



**Made in the USA**

Marmon Industrial Energy & Infrastructure © 2024 • 1300 Industrial Road • Mt. Pleasant, TX 75455, USA • Phone: 903-572-3475 • [www.marmoniei.com](http://www.marmoniei.com)

DC05/08.12.24



# Explore Our Industrial Automation & Control Products

Innovative products for industrial automation and control solutions.



Contactors &  
Protection Relays



Variable Speed  
Drives



Pushbuttons, Switches &  
Pilot Lights



Soft Start  
Controllers



Interface &  
Control Relays



PLC/PAC &  
Controllers



Human Machine  
Interface Panels



Industrial Automation  
Software



Power  
Supplies



[www.se.com/us](http://www.se.com/us)

Life Is On

**Schneider**  
Electric



> INDUSTRY-LEADING WIRE & CABLE MANUFACTURER <

XHHW-2 | TRAY CABLE | JACKETED MC | SERVICEDRIVE® VFD CABLE SYSTEMS



Service **YOU CAN COUNT ON.**

*Are your cable systems impeding efficiency and reliability?*

WIRE & CABLE CAN GREATLY IMPACT:

**OPERATIONAL EFFICIENCY  
DRIVES & MOTORS  
OPERATOR SAFETY**

For decades, Corpus Christi customers have turned to Service Wire's local team of experts to **evaluate and optimize their cable systems**—minimizing downtime and maintenance while maximizing production.

*Let's optimize your cable systems today.*



**RELIABILITY EXPERTS** at Your Service.

Call **800-231-9473** to schedule an evaluation.

# MAJOR BRAND LINES

**3M**

**BELDEN**

**B-Line**

**BRADY**

**BURNDY**

**Bussmann**

**Crouse-Hinds**  
by **EATON**

**Dekoron**  
Wire & Cable LLC

**Dialight**

**FEDERAL SIGNAL**

**GREENLEE**

**HILTI**

**HUBBELL**  
Wiring Device-Kellems

**IDEAL**

**INTEGRA**  
ENCLOSURES

**KLEIN TOOLS**

**nvent**  
ERICO

**nvent**  
HOFFMAN

**Ocal**

**THE OKONITE COMPANY**

**OSG** GEDNEY

**PANDUIT**

**PULS**

**Raychem**

**Roxtec**

**Schneider**  
Electric

**Service Wire Co.**  
Manufacturing quality. Delivering service.

**SOLA** HD

**Southwire**

**Thomas & Betts**  
A Member of the ABB Group

**UNICO**

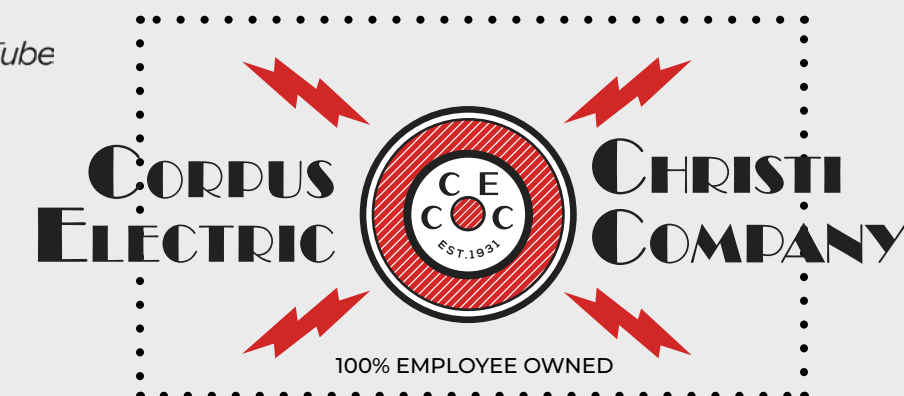
**UNISTRUT**  
A PART OF **Atkore**

**Weidmüller**

**WESTGATE**  
THE FUTURE IS HERE... AND IT'S QUITE BRIGHT!

**Wheatland Tube**

**ZLED LIGHTING**  
ZLED-LIGHTING.COM



cc-electric.com



We're the largest electrical supply  
wholesaler in South Texas

# CORPUS CHRISTI ELECTRIC COMPANY



We have the materials you need,  
the solutions that work, and the  
customer service you deserve!



2323 Leopard Street  
Corpus Christi, TX 78408

**361-882-2564**  
**cc-electric.com**